

# 2.5 24V-Input

## Application Manual

[www.pinetek-networks.com](http://www.pinetek-networks.com)





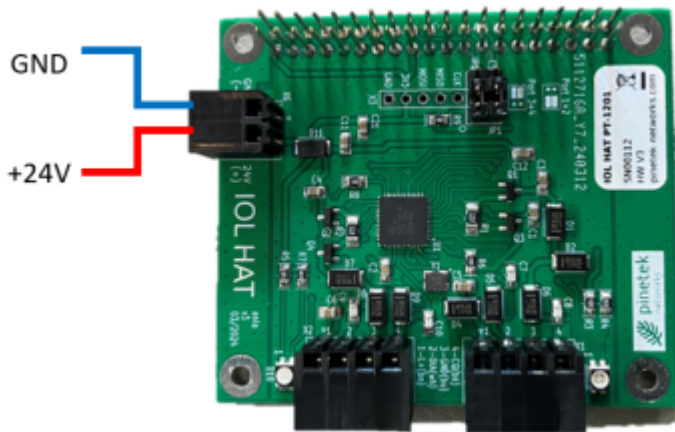
---

# Table of Contents

**2.5 24V-Input** ..... 5



## 2.5 24V-Input



The 24V power supply input is used for the L+ supply of the SDCI ports. The logic part of the module is supplied over the 3V3 on the 40-pin GPIO connector or the generic connector.

The connector is 2pin, 3,5mm MC-type



Depending on the connected SDCI devices, the 24V input can consume up to 1,3A current. Please use adequate cabling. The port is not hardware overcurrent protected, the L+ lines and CQ-lines shall be current limited by the driver in software.